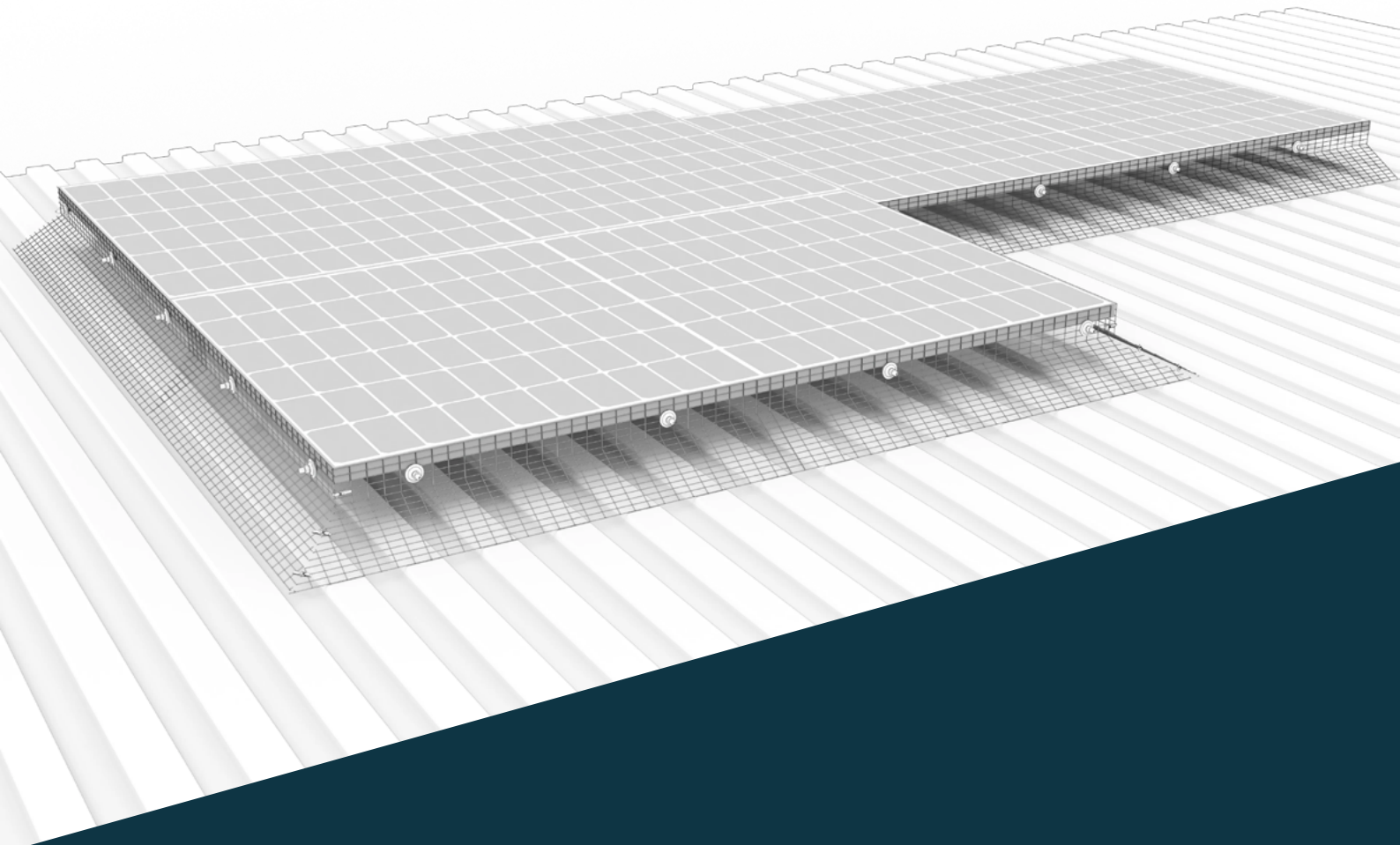




EnviroGuard



INSTALLATION INSTRUCTIONS

SOLAR MESH



Boundary Bank,
Boundary Bank Lane
Kendal LA9 5RR



0800 068 7279



enquiries@birdcontrol.uk.com



www.birdcontrol.uk.com

INSTALLATION INSTRUCTIONS

Welcome to the installation instructions for Enviroguard's Solar proofing bird mesh, installed using either the Solar mesh or Solar Speed Clips to effectively bird proof your solar array.

The solar mesh acts as a physical barrier to prevent birds from accessing the underside of your solar panels and requires no drilling, safeguarding any manufacture warranty.

Designed for easy installation and maintenance, our solar panel mesh ensures the integrity and efficiency of your solar array while protecting it from potential damage and nuisance caused by nesting birds.

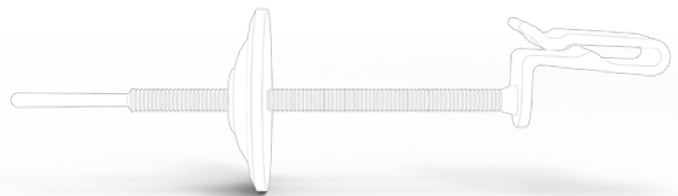
Follow these step-by-step instructions to properly install and secure your Solar proofing mesh.

SOLAR SPEED CLIP



SOLAR MESH CLIP

Pushfit



Premium Adjustable



Boundary Bank,
Boundary Bank Lane
Kendal LA9 5RR



0800 068 7279



enquiries@birdcontrol.uk.com



www.birdcontrol.uk.com

After selecting Solar Mesh as your preferred proofing system, it's crucial to follow a few steps to ensure you purchase the correct mounting clips and quantities for your solar array, ensuring proper installation of the solar proofing mesh.

THERE ARE THREE TYPES OF MOUNTING CLIPS AVAILABLE TO SECURELY FIX YOUR SOLAR MESH IN PLACE

SOLAR SPEED CLIP

PUSHFIT MESH CLIP
(Works like a cable tie and cannot be removed)

PREMIUM MESH CLIP
(Tension can be altered by hand, the clip can be removed if required)



SOLAR SPEED CLIP

The Solar Speed Clip is available in 30mm, 35mm, and 40mm sizes. It attaches to the front of the solar panel frame through the mesh apertures, securing the solar mesh in place. The Speed clip can easily be removed for maintenance and cleaning by reversing the installation process.

PUSHFIT/PREMIUM MESH CLIP

- The Pushfit clip comes with a washer that acts like a zip tie, making it a permanent solution as it can only be removed by cutting.
- The Premium clip, on the other hand, uses a washer and nut, allowing the tension on the mesh to be adjusted it can also easily be removed and reinstalled for maintenance.

To determine how many meters of solar mesh and the required number of fixing clips you will need, first calculate the perimeter of your solar array.

STEP 1 CALCULATE THE PERIMETER

Add up the lengths of all the sides of your solar array to find the total perimeter in meters.

STEP 2 DETERMINE THE REQUIRED MATERIALS

SOLAR MESH

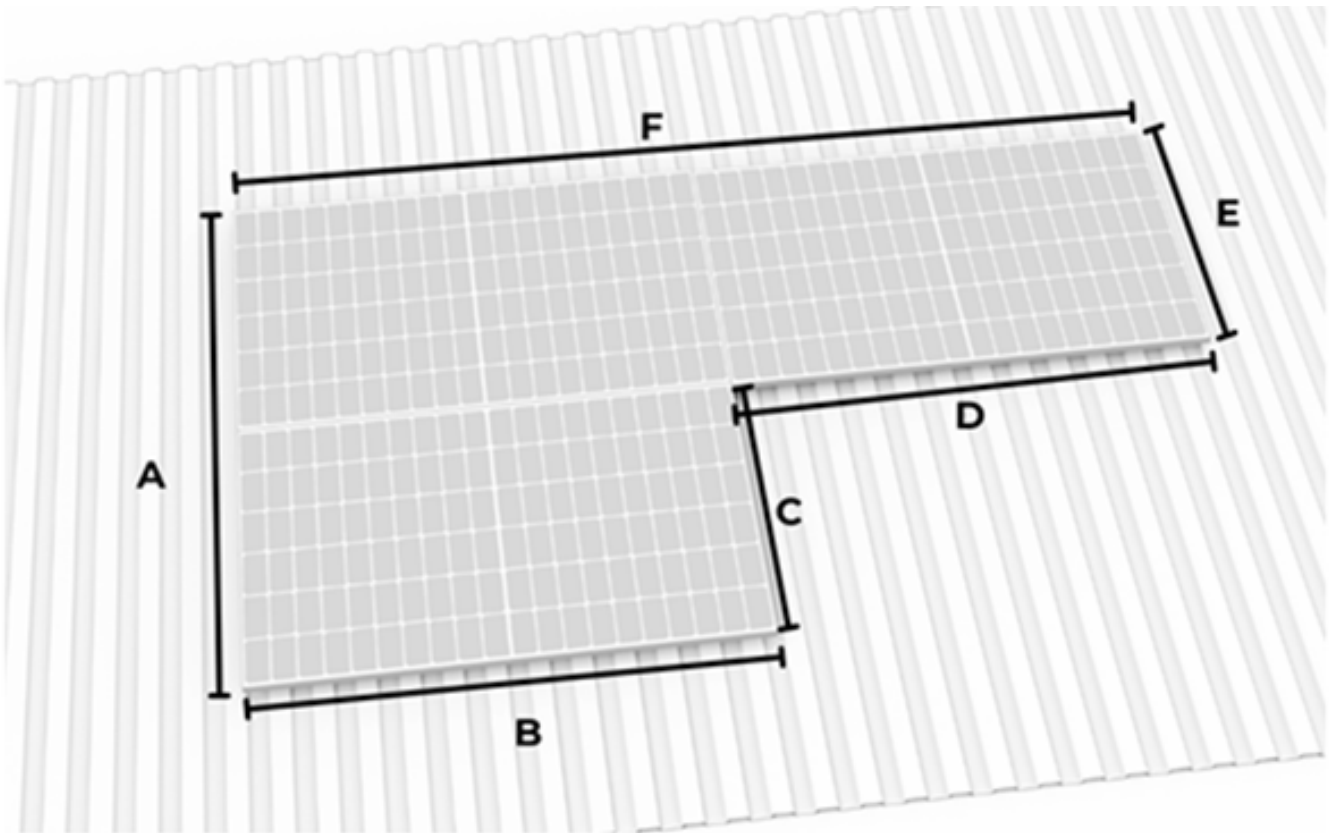
We recommend purchasing an additional 1-2m of solar mesh to the perimeter of your solar array to account for joints and corners.

SOLAR SPEED CLIPS

We recommend using 5-6 speed clips per meter. Multiply the perimeter by 5 to find the total number of speed clips required.

PREMIUM/PUSHFIT MESH CLIPS

We recommend using 2 clips per meter. Multiply the perimeter by 2 to find the total number of Premium or Pushfit mesh clips required



These calculations vary between each solar array due to factors such as number of corners etc.



Boundary Bank,
Boundary Bank Lane
Kendal LA9 5RR



0800 068 7279



enquiries@birdcontrol.uk.com

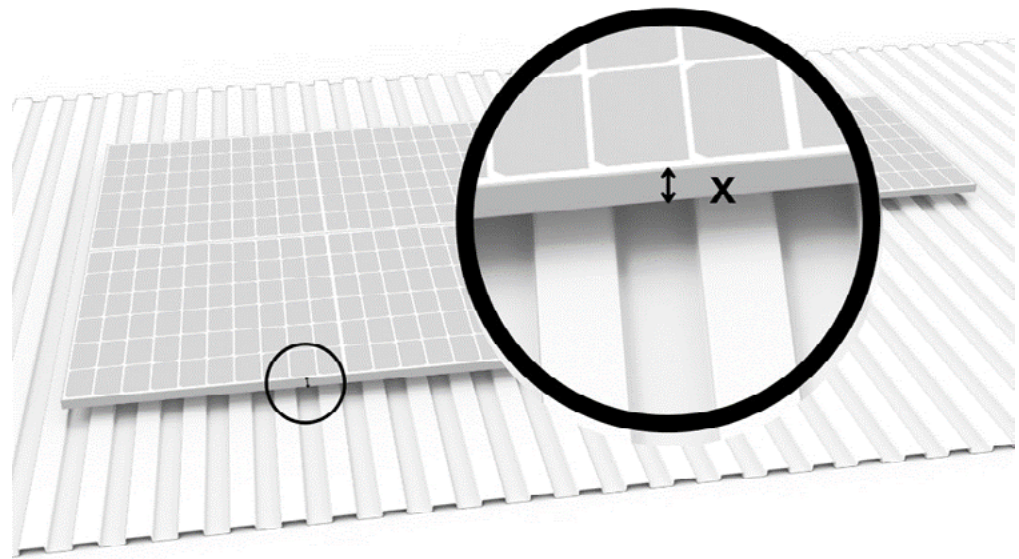


www.birdcontrol.uk.com

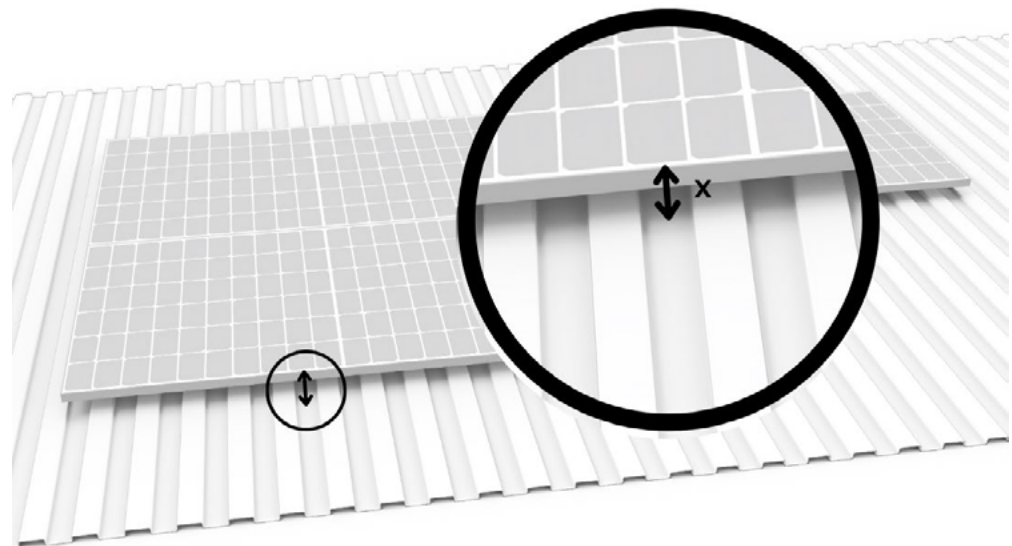
SPEED CLIP INSTALLATION

1

Measure the depth of your solar panels to determine if 30mm, 35mm or 40mm speed clips are required (X).

**2**

Measure the vertical distance from the top of the panel (where the mesh will be attached) to the roof (X). This distance will help judge where to bend the mesh to suit the roof profile. The solar mesh can be folded over or cut to reduce the width if necessary.



It is recommended to cut the mesh rolls into manageable lengths between 1m – 1.5m for ease of installation.



Boundary Bank,
Boundary Bank Lane
Kendal LA9 5RR



0800 068 7279

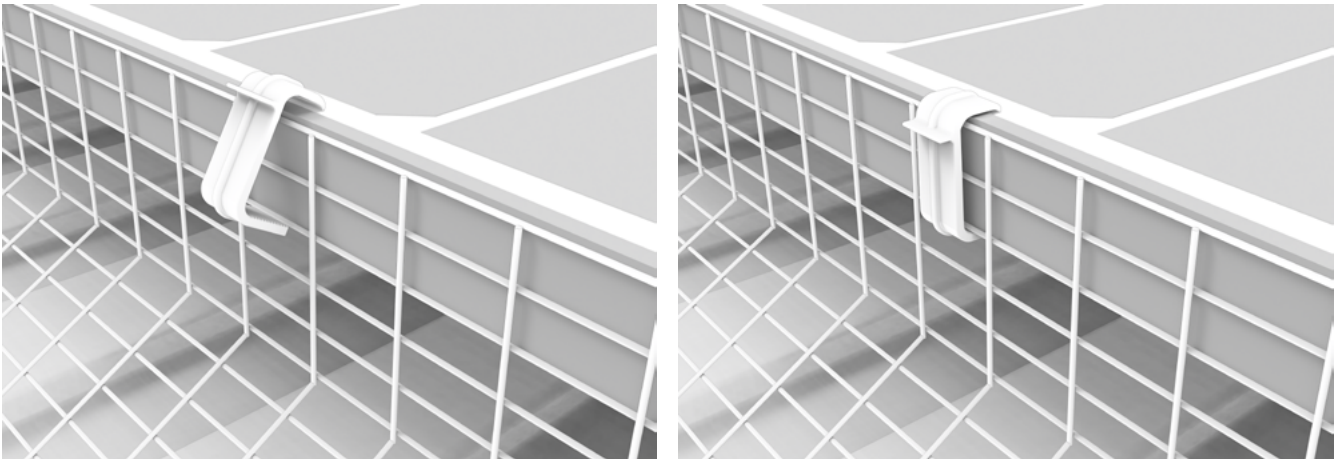


enquiries@birdcontrol.uk.com

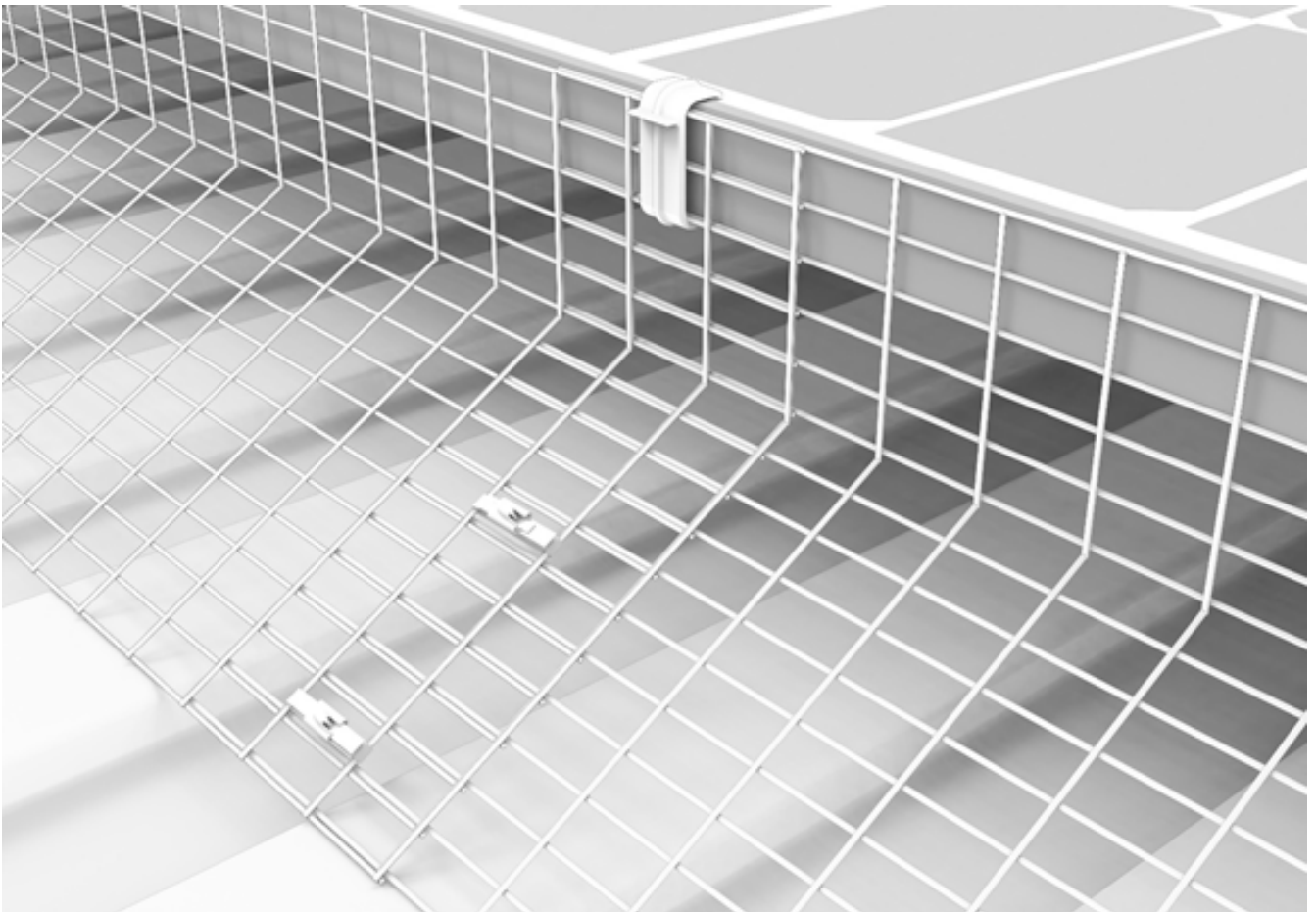


www.birdcontrol.uk.com

- 3** To fix the solar proofing mesh, hold a cut length against the panel. The Solar Speed Clip is then installed passing through the mesh apertures and firmly securing the mesh in place.

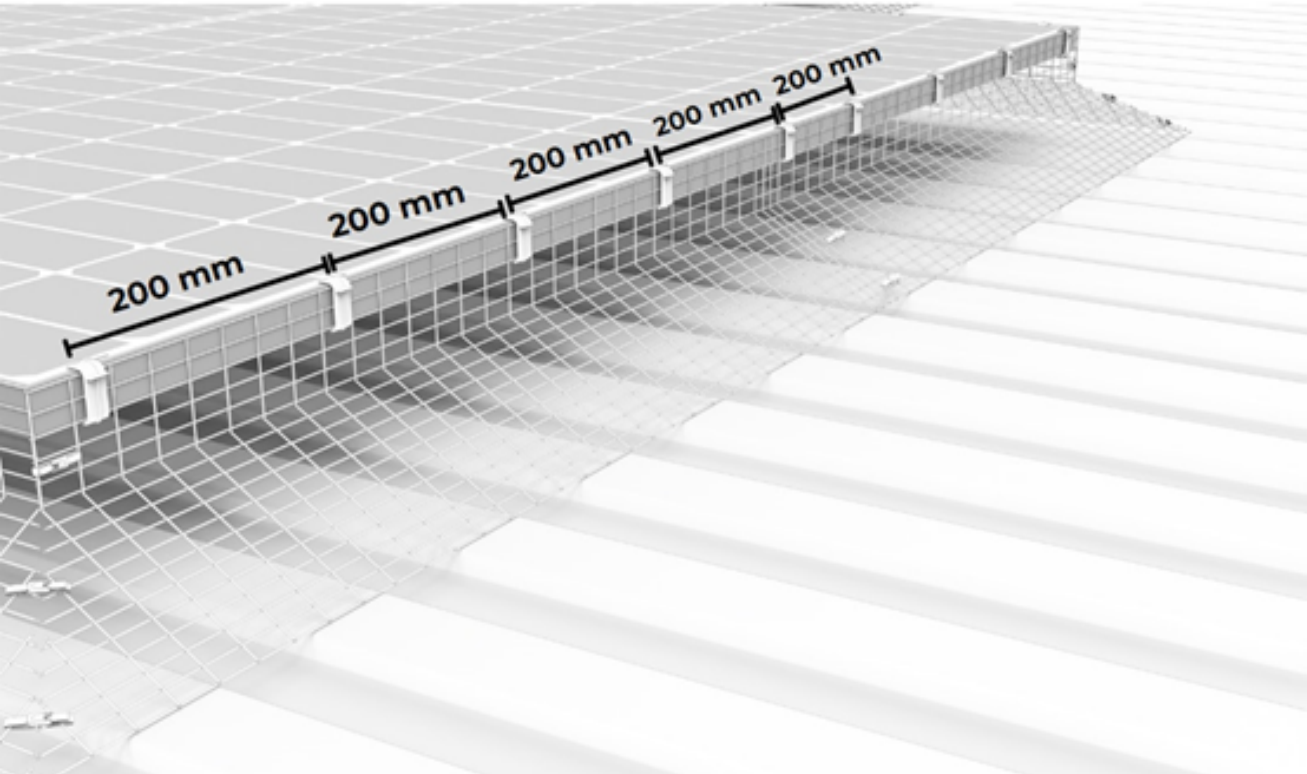


- 4** When jointing the cut lengths, overlap the mesh by three apertures and insert a fixing clip through the middle aperture. Install Stainless steel tie as demonstrated in the reference image to secure the mesh lengths together.



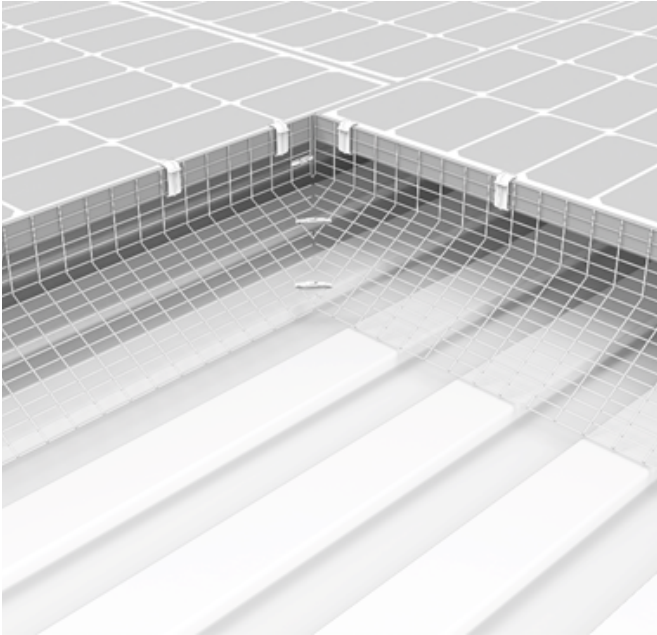
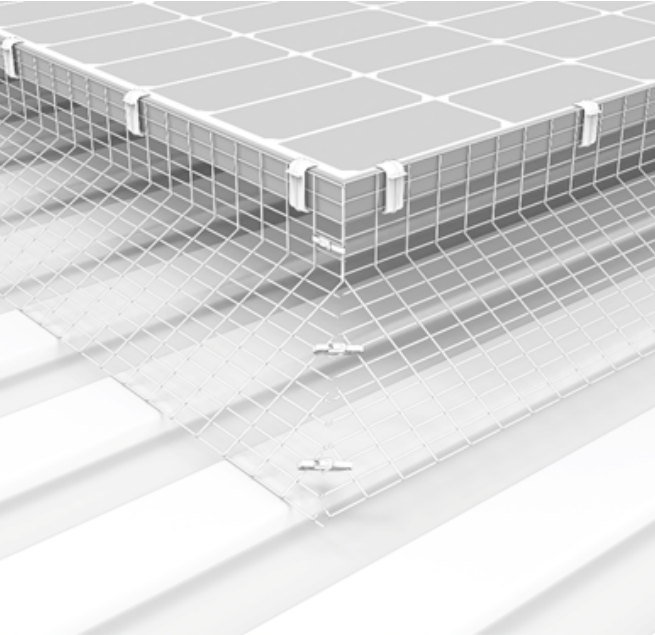
5

Solar Speed Clips should be fixed every 200mm. Once the Speed clips are installed the Solar mesh is secured in place. It is recommended that stainless steel ties are used to connect the solar mesh lengths together on any joints.



6

The solar mesh should be installed up to both internal and external corners leaving no gaps.



Boundary Bank,
Boundary Bank Lane
Kendal LA9 5RR



0800 068 7279



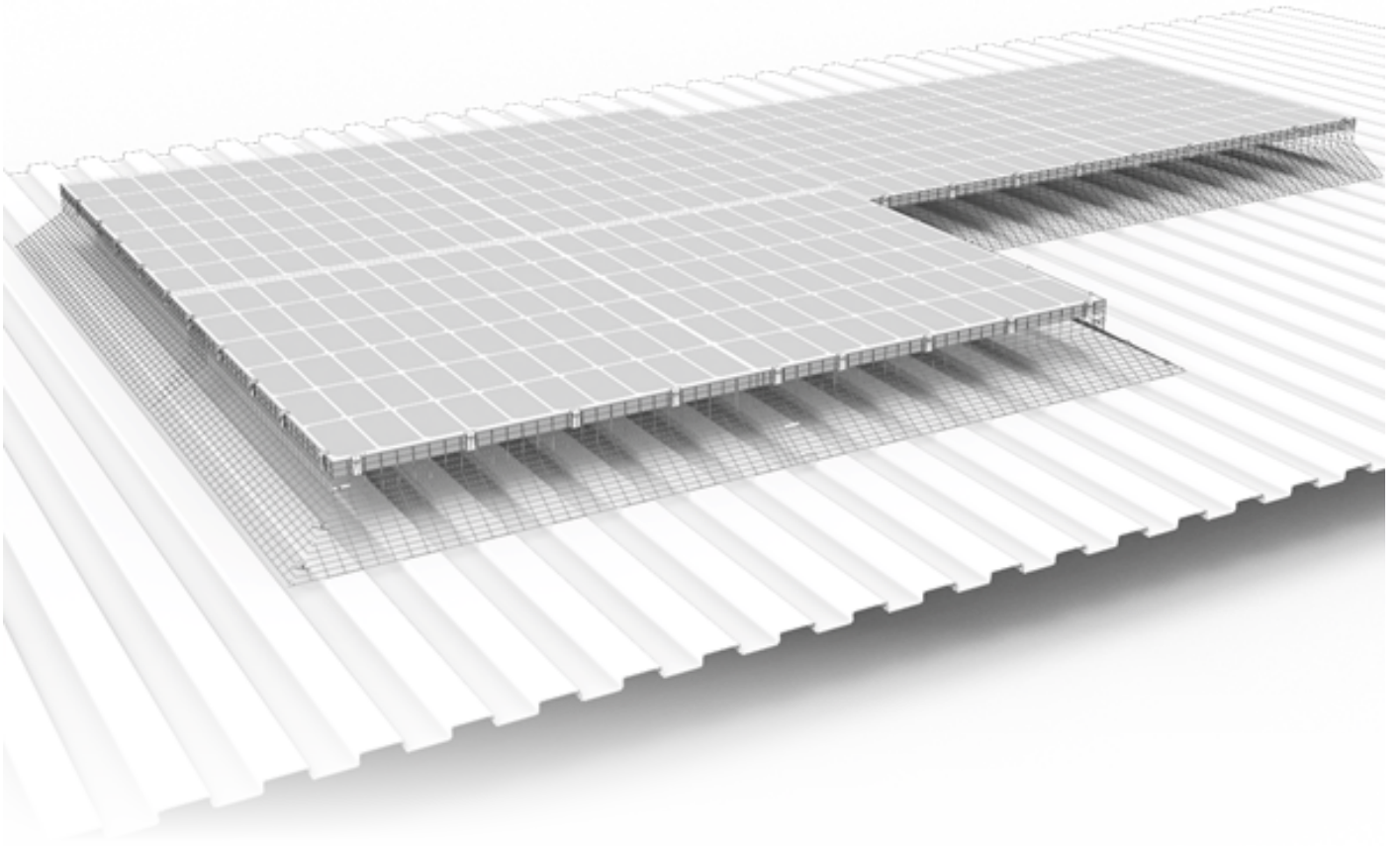
enquiries@birdcontrol.uk.com



www.birdcontrol.uk.com

7

Complete a final check that all components have correctly been installed. Your Solar array is now safe from bird ingress!



Boundary Bank,
Boundary Bank Lane
Kendal LA9 5RR



0800 068 7279



enquiries@birdcontrol.uk.com



www.birdcontrol.uk.com

PREMIUM AND PUSHFIT MESH CLIP INSTALLATION

1

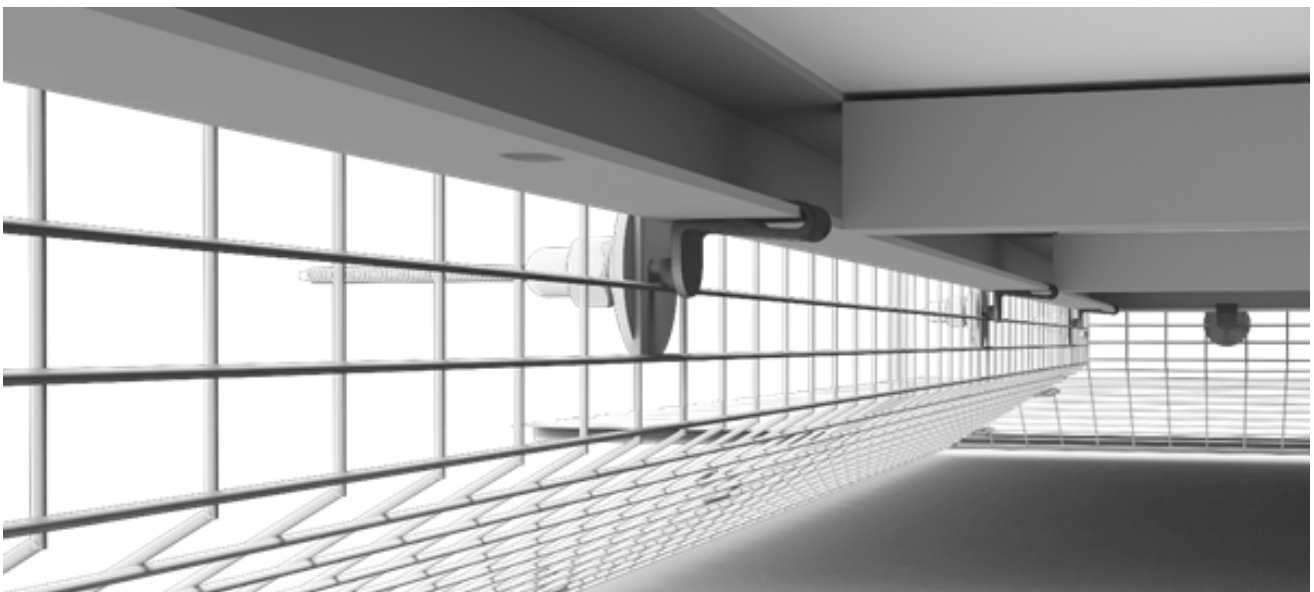
Both the Premium and Pushfit mesh clips require a 10 - 20mm return lip on the underside of the panel. This is where the clip is fixed, ready for the solar mesh to be installed.

If there is no return lip on the solar panel, then the Solar Speed clip can be used.

**2**

To install the solar proofing mesh, align it so that the mesh apertures fit onto the Solar Clip.

Depending on the type of solar mesh clip you've chosen, you will then either secure it with the clip washer alone or with both the clip washer and nut.



Boundary Bank,
Boundary Bank Lane
Kendal LA9 5RR



0800 068 7279



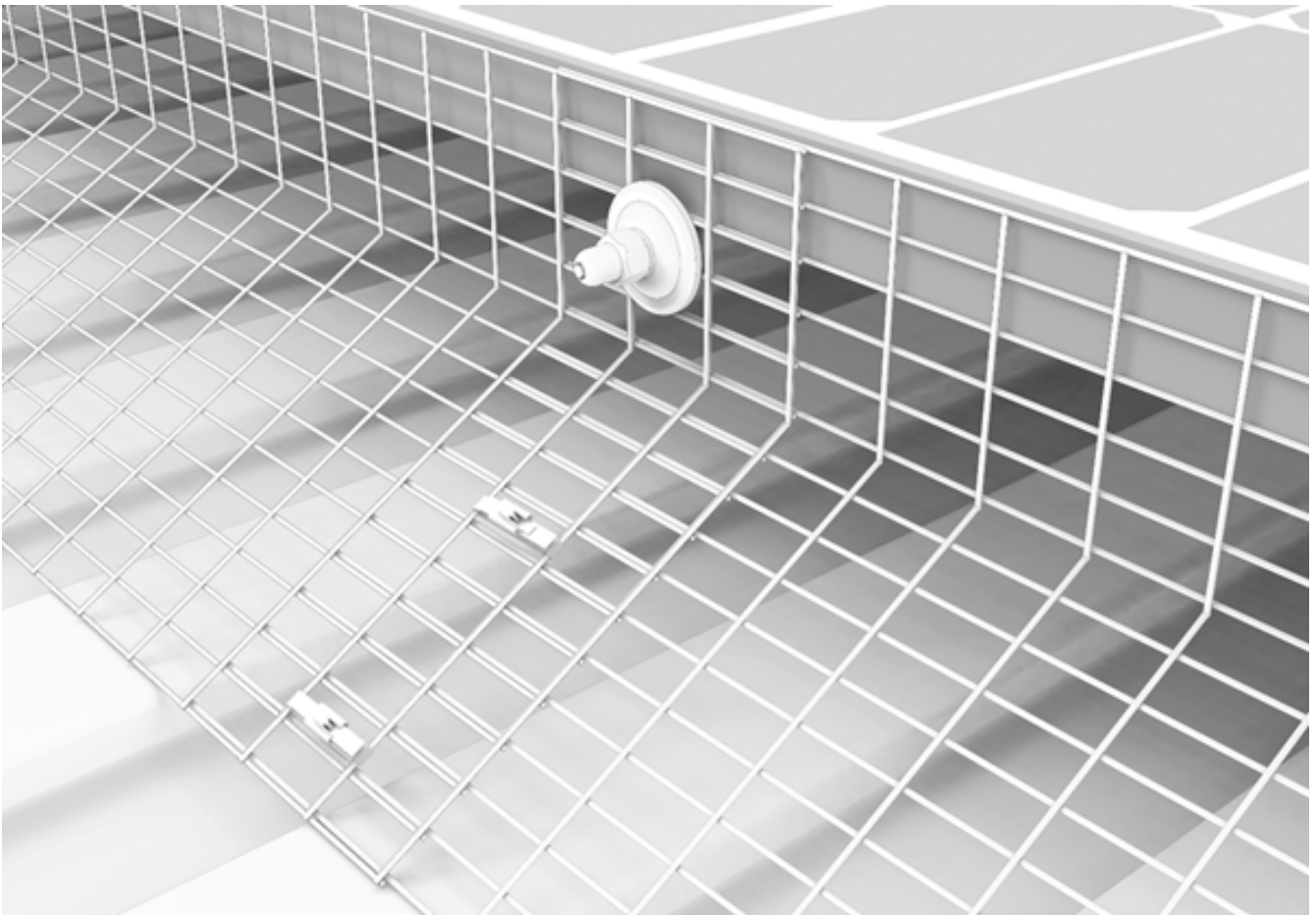
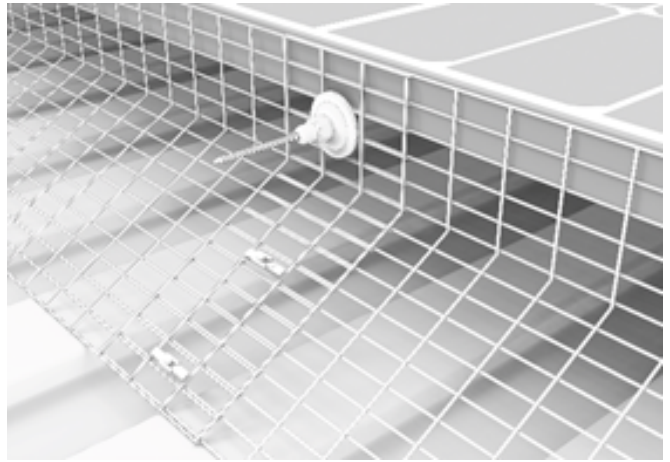
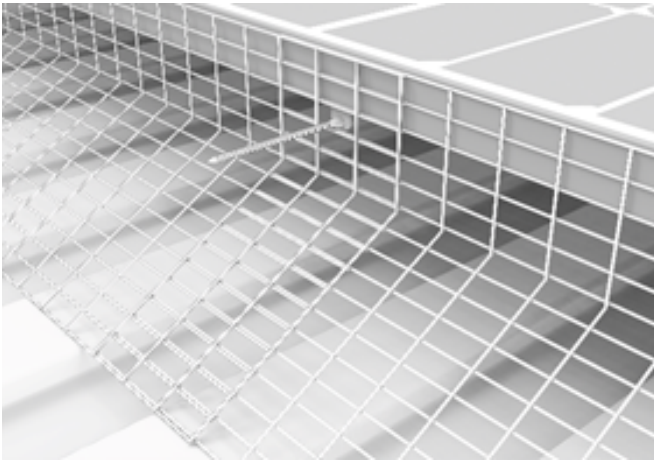
enquiries@birdcontrol.uk.com



www.birdcontrol.uk.com

3

When jointing the mesh, overlap by three mesh apertures and install a fixing clip as shown in the reference images below. The excess shaft can be removed once the clips are secured in place for a more discreet finish.



Boundary Bank,
Boundary Bank Lane
Kendal LA9 5RR



0800 068 7279



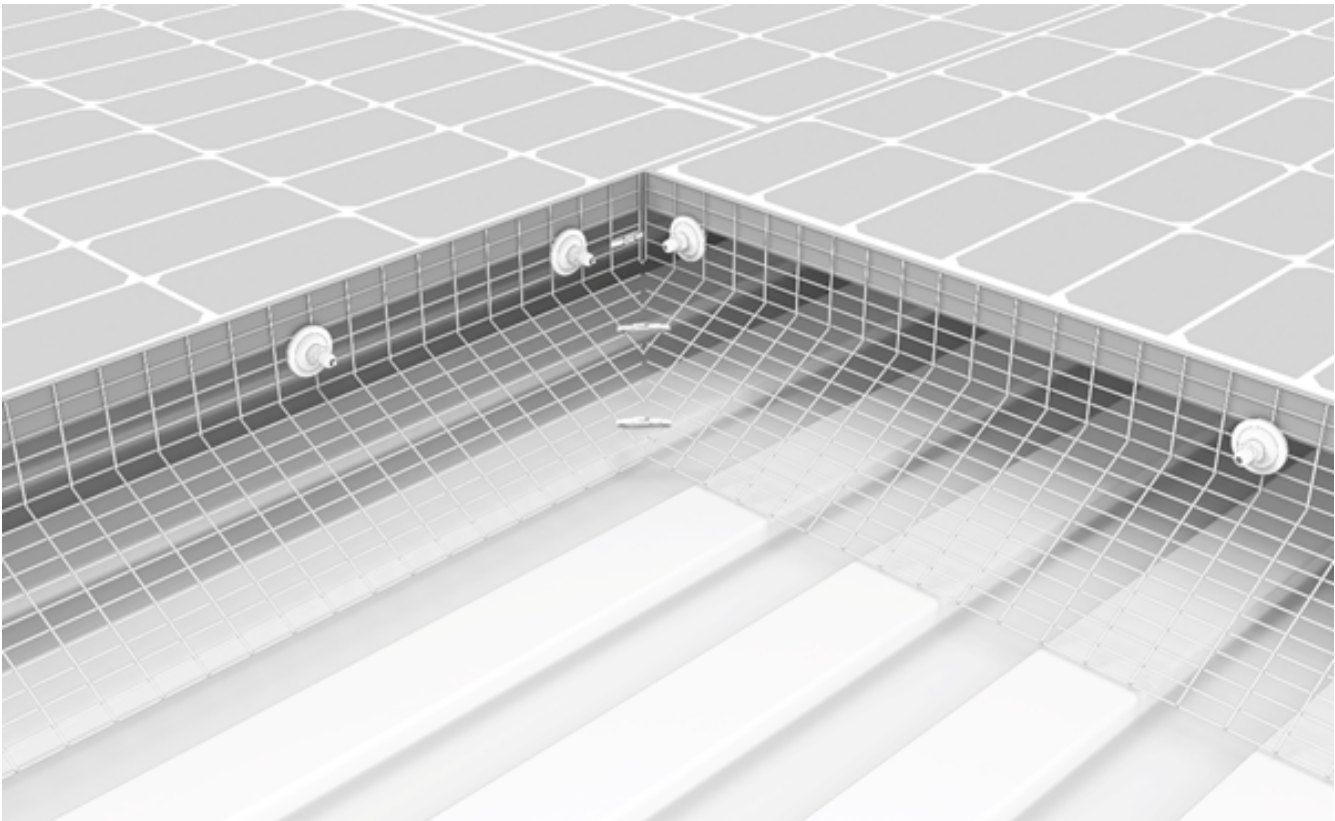
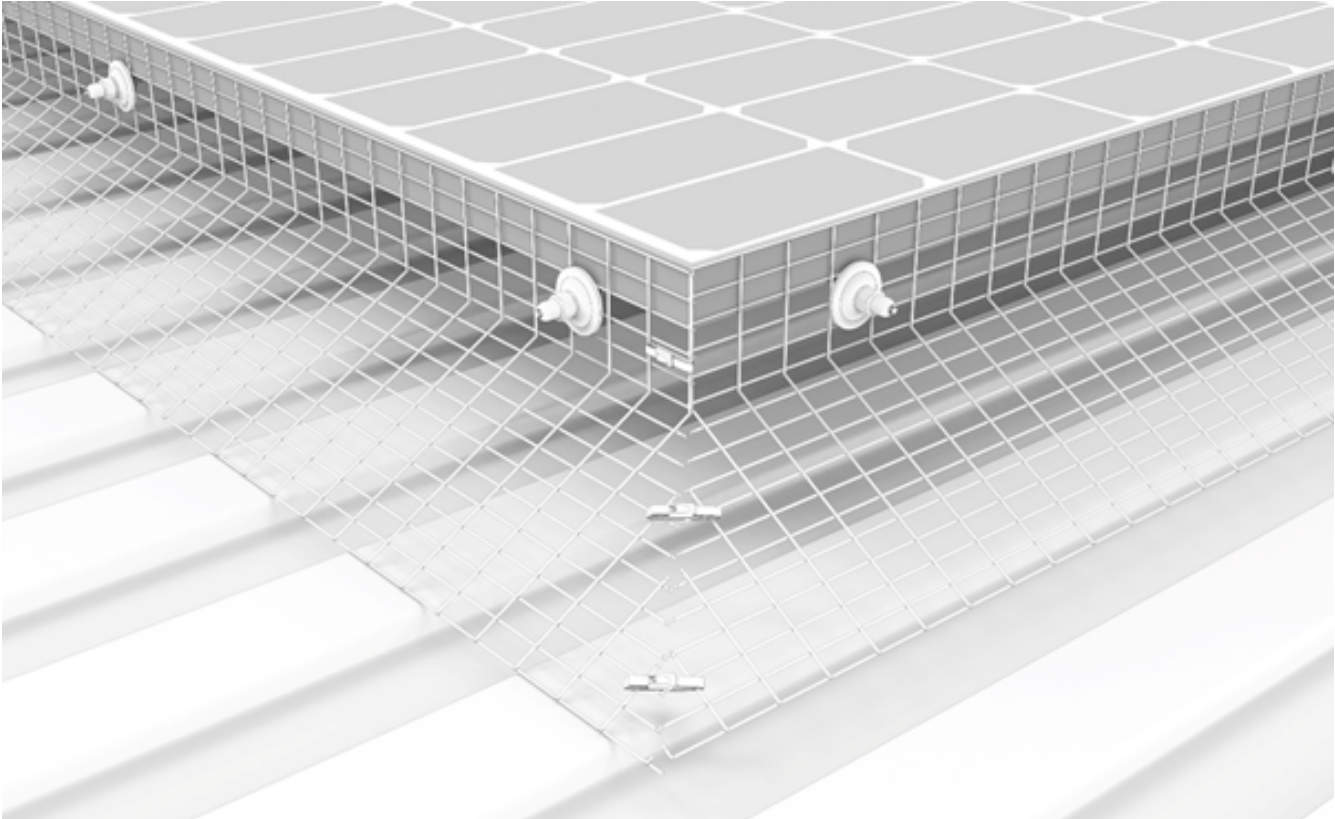
enquiries@birdcontrol.uk.com



www.birdcontrol.uk.com

4

Solar proofing mesh should be installed up to both internal and external corners leaving no gaps. Stainless steel ties are recommended to join the lengths of mesh.



Boundary Bank,
Boundary Bank Lane
Kendal LA9 5RR



0800 068 7279



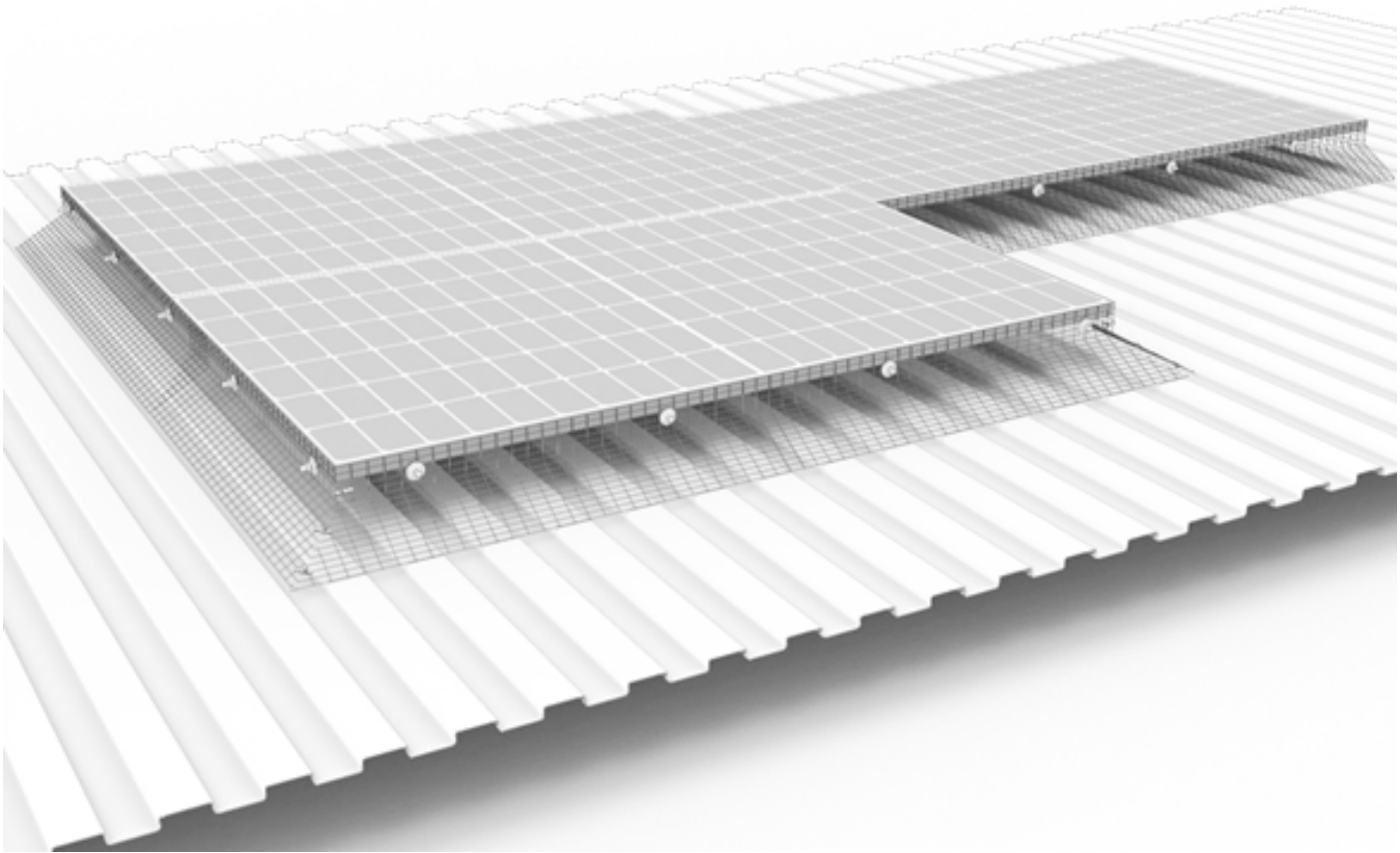
enquiries@birdcontrol.uk.com



www.birdcontrol.uk.com

5

Complete a final check that all components have correctly been installed. Your Solar array is now safe from bird ingress!



Boundary Bank,
Boundary Bank Lane
Kendal LA9 5RR



0800 068 7279



enquiries@birdcontrol.uk.com



www.birdcontrol.uk.com