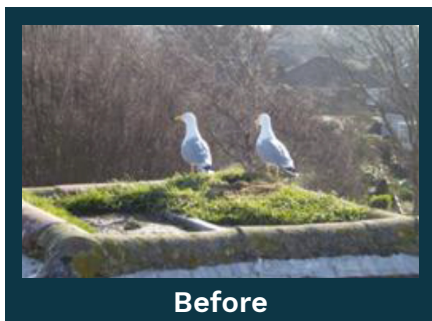


Bird Netting Installation Guide

Bird Netting is one of the most popular methods used for protecting structures against all common species of urban bird pests. Its success is due principally to the fact that, if it is installed correctly then it is virtually the only system that can be used with confidence in places subject to high levels of bird infestation and where birds are roosting at night.

Bird netting is very versatile as it can be used at all angles for proofing a wide variety of structures, from small perches to complete building facades and roofs. The square mesh running horizontally and vertically ensures that the netting is virtually invisible when installed correctly. The bird netting is completely humane and cannot physically harm the birds in any way. It simply deters them so they move on to perch somewhere else.



All of our nets come in stock sizes available for next working day delivery or may be cut to size to the nearest square metre. Cut to size nets will take 4 working days to dispatch.

STOCK SIZES

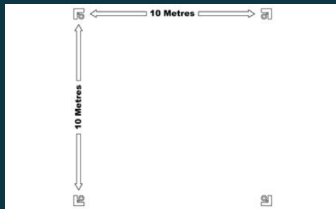
5m x 5m, 5m x 10m, 5m x 15m, 5m x 20m, 10m x 10m, 10m x 15m, 10m x 20m,
15m x 15m, 15m x 20m, 20m x 20m

Our nets are available in different mesh sizes according to the target species. 75mm mesh is used for Seagulls, 50mm mesh for pigeons, 40mm mesh for Pheasants, 28mm mesh for Starlings and 19mm mesh for Sparrows and small birds. All of our nets are available in Black, Stone or Translucent White colour. We also offer flame retardant netting in 50mm and 19mm mesh sizes.



Bird Netting Installation Guide

INSTALLING A 10M X 10M NET



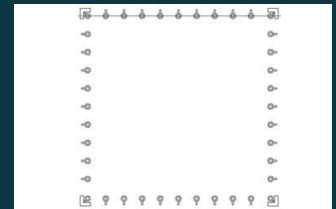
Step 1

Install corner fixings at every corner or every 10m along a straight run.



Step 2

Fit intermediate fixings in a straight line between the corner fixings at 1 metre intervals for 75mm and 50mm nets, 0.5 metre intervals for 40mm and 28mm nets and 0.3 metre intervals for 19mm nets.



Step 3

Run 10 metres of wire rope through the fixings of one side.



Step 4

Loop one of the wire ends through the corner fixing and secure with either 2 copper ferrules or 2 wire rope grips.



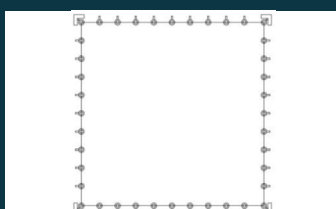
Step 5

Hook an opened barrel strainer to the other corner fixing and thread the free end of the wire rope through the eye. Pull the wire rope tight. Secure using 2 copper ferrules or 2 wire rope grips.



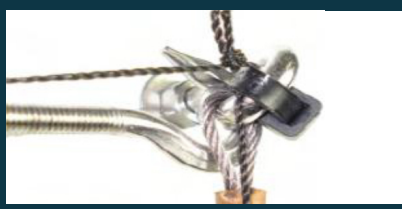
Step 6

Tension the wire by tightening the barrel strainer.



Step 7

Repeat steps 3 - 6 for the other 3 sides of the area. Larger nets may require additional diagonal support wires.



Step 8

To attach the net to the rope, attach one corner of the net to the corner fixing using a netting corner tie. When you reach each corner ensure that a netting corner tie is installed around the mesh and the corner fixing.



Step 9

Hog ring every mesh square around the edge to the wire rope ensuring that the net is pulled tight and square.





Galvanised Steel Fixings

Our galvanised steel fixings enable you to install a low cost netting solution. The fixings and wire rope are made from galvanised or zinc plated steel, which is lower cost but has a shorter life span than stainless steel.



Stainless Steel Fixings

Our stainless steel fixings are ideal for professional and commercial installations. The fixings and wire rope are made from A2 (304) stainless steel and will last over 10 years in normal UK weather conditions.

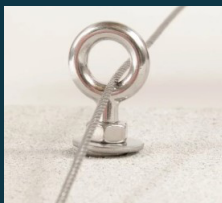


Corner Fixings

Corner fixings should be installed every 10m around the perimeter of the net. These more substantial fixings allow the wire rope to be tensioned to support the weight of the net.

The type of corner fixing to be used depends on the material that the net is to be fixed to:

Masonry



This is the most common type of corner fixing. Use M6 anchor bolts.

Steelwork



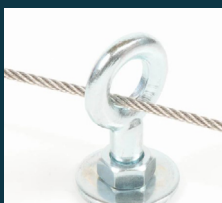
For steel beams and girder work; use 20mm beam clamps or 6mm beam bolts.

Timber



For timber use 100mm vine eyes

Cladding



For cladding and sheet steel use 15mm or 25mm cladding bolts

Roof Tiles



Wherever possible install the corner fixings into the ridge tiles of a roof using M6 anchor bolts.





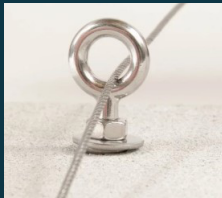
Intermediate Fixings

Intermediate fixings should be installed at regular intervals between the corner fixings. Use 1 metre intervals for 75mm and 50mm nets, 1/2 metre intervals for 40mm and 28mm nets and 1/3 metre intervals for 19mm nets.

If access is required behind the perimeter of the net our intermediate wire rope brackets allow the wire rope to be unhooked in between the corner fixings.

The type of intermediate fixing to be used depends on the material that the net is to be fixed to:

Masonry



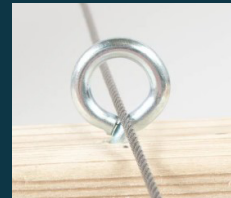
For masonry; use 45mm screw eyes and wall plugs, hammer in net spikes, or 38mm split pins and masonry rivets

Steelwork



For steel beams and girders use hammer on beam clips. These are available in varying sizes according to the thickness of the beams

Timber



For timber use 45mm screw eyes

Cladding



For cladding use angle brackets with 25mm self drill screws and bonded washers to ensure a water tight fixing.

Roof Tiles

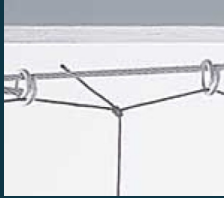


For roof tiles use hammer on beam clips, slate brackets or stick on bases.



Bird Netting Installation Guide

NET FIXINGS



Nets should be fixed to the tensioned wire rope using steel hog rings for a long lasting installation.



Corner fixings should also be attached with netting corner ties for extra strength.



For easy removal of a net, use net clips instead of hog rings.

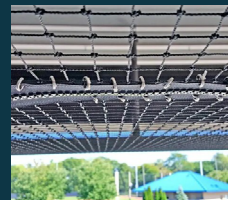
NET ZIPS



If regular access is required through the net (e.g. for light fixtures and roof access) use netting zips.



To fit a zip to the net simply use steel hog rings to staple the fabric edging of the zip to the netting, using one staple per mesh square on each side of the net.



For extra strength; use netting corner ties at each end of the zip. Then un-zip the zip and snip open the netting behind it.

